



Moqi M1 PalmPass

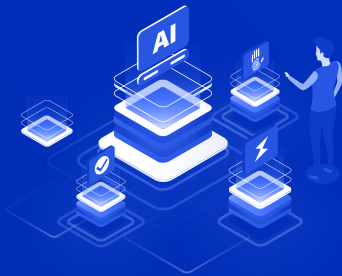
Easier, and safer

Moqi M1 PalmPass is a next-generation contactless access control terminal that authentication with palm print and palm vein. It helps to identify and verify personnels in less than 350ms from a database of 20,000 records, which makes access control and visit management safer, easier and more efficient.

Equipped with powerful 2.0 Tops computing power, advanced dual camera of RGB + IR and liveness detection technology, Moqi M1 PalmPass helps to build a biometric-based access control ecosystem with better user experiences, and no longer fear of spoofing attacks.

Moqi M1 PalmPass can be applied to a wide range of access control scenarios such as campus, residential area, building, industrial park and more.

Core Advantages



Ultimate user experience

Extremely fast

- Authentication within 350ms with robust 2.0 Tops computing power

Contactless

- No physical contact required, more hygienic during the pandemic

User-friendly

- Authentication can be processed with various palm postures via fisheye lens

Automatic light adjustment

- Light parameters are automatically adjusted according to the surroundings, adapted to any lighting conditions

Secure, accurate and reliable

Large database with high precision

- Dual camera of RGB + IR collects multi-modal data, more data, higher precision
- Local processing in a database of 20,000 volume with FAR < 0.00001%

Liveness detection

- A clear palm vein image requires flowing blood, it is difficult to be forged
- Attack resistance rate > 99.99%, no more fear of spoofing attacks

Uniqueness

- As all palm prints and veins are unique (even for twins or one's left and right palm), thus it's safer than facial



Privacy-preserving

Pro-active

- Users are fully aware to data capture as it requires to raise hands for authentication

Data security

- Palm vein can only be captured using professional devices, and as such difficult to be stolen and replicated

Privacy protection

- All data are encrypted from generation, transmission to storage, no original images are saved

No fear of data leakage

- As palm features are abstract, it is really difficult to trace individuals with palm information once the data is leaked



Product Features



Access control management

- Flexible settings on visitors and visit time, enable to refined management by time and locations



Event records

- All authentication records can be traced as users' authentication time and location will be recorded



Multiple authentication methods

- It supports palm authentication or using contactless NFC cards of ISO14443 Type A&B



Hardware protection

- Solid state relay and tamper switch, no more fear of Tesla coil and strong magnetic interference and disassembly



Rich expansion interface

- It supports RS232, RS485, Wiegand input and output, alarm input, sensor input, door button and other interfaces



Device management platform

- It supports localized deployment
- All of the device, personnel and event can be operated on the platform
- It supports docking with other third-party systems

Data Privacy and Security is Our Top Priority

- No original image will be stored, all data are saved only as features
- Only localized deployment is offered, which guarantees data security and privacy
- All data are encrypted when downloaded to the devices

Scenarios



Corporate & Residential

- Personnel management, visitor management, turnstile access



Campus

- Dormitory management, laboratory management, entrance verification, staff management



Industrial Park

- Personnel management, access without cards, area management

Size



Specifications

Type of Biometrics	Palm + Palm Vein + Finger Vein
Matching Capacity (1:N)	20,000
FAR	< 0.00001%
Matching Speed	350ms
Mode of Matching	Edge computing, no network required
Liveness Detection	Supported
Other Authentication Modes	ISO14443 13.56MHz Type A&B Contactless Identification Card
Screen	6", 720 x 1440, Touchscreen
Temperature Measurement Module	Supports external module to measure wrist temperature
Human Proximity Sensor	Supported
Bluetooth	Supports Bluetooth 5.0 and above
Wi-Fi	2.4 & 5GHz, supports 802.11 ac/b/g/n
USB	Supports USB 2.0 Host & OTG
Ethernet	RJ45
Relay	Supported
Serial Communication	Supports RS232 & RS485
Wiegand Port	Supports input and output
Tamper	Supported
Other Ports	Supports alarm input, door sensor, door button
Ingress Protection (IP) Rating	IP66* (Grade 6 waterproofing when mounted on a wall)
Operating Temperature	-10°C ~ 60°C
Power Supply	DC: 12V / 2A
Mount modes	Wall mount, Type 86 Junction Box, Desktop, Gate, Pole Type



Moqi Technology
<https://moqi.com.cn/en>

Address:
20 EMERALD HILL ROAD , 229302 , Singapore

Business Cooperation Inquiries:
info@moqi.ai

After Sales Inquiries:
service@moqi.ai



Scan QR code for more details

The information contained in this document is the proprietary and exclusive asset of MOQI Technology unless otherwise indicated. No part of this document, in whole or in part, may be reproduced, modified or transmitted without the prior written permission of MOQI Technology. Unauthorized use or disclosure may be considered unlawful.

The information contained in this document is subject to change without notice. The only warranties for MOQI Technology's products and services are contained in the contracts for such products and services or in the accompanying warranty statement. Nothing in this document should be construed as constituting an additional warranty.

MOQI Technology has made every effort to ensure the accuracy of the information contained in this document. However, MOQI Technology accepts no responsibility for any errors or omissions therein.